



POWER ANALYTICS

Foresight as accurate as hindsight.

Paladin®

Power Analytics Solutions for Data Centers and Network Operations Centers

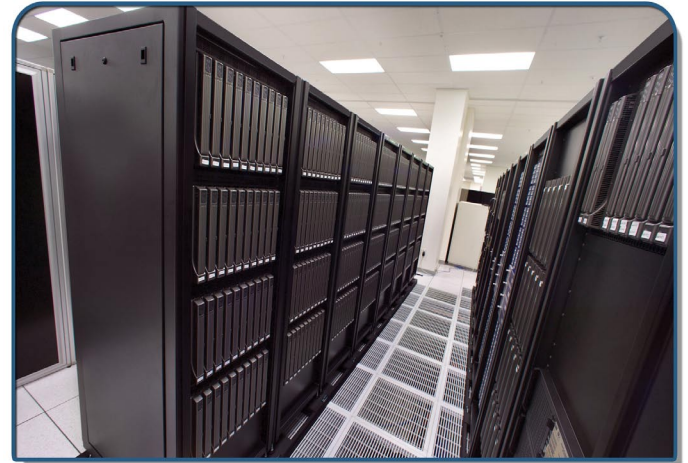
Taking responsibility for managing the data center or network operations center that serves as the hub of your organization's operations leaves little margin for error... and zero room for downtime.

With the cost of downtime for some companies exceeding \$6 million per hour, knowing your true capacity and the power implications of technology upgrades, configuration changes, and scheduled system maintenance procedures is crucial to ensuring a failsafe level of uptime.

With our Paladin® DesignBase™ products, users can simulate, understand, and re-engineer how their entire data center infrastructure will respond in the event of unexpected faults or routine system maintenance. Potential design problems are engineered out, and both emergency and maintenance procedures can be tested until they are perfected.

Once a design is "Perfect on Paper," our on-line Paladin® Live™ software platform can be deployed to detect variations between "as-designed" specifications and actual electrical system performance... enabling it to accurately predict potential points of failure and ensure that facilities operate as they were designed to, down to the smallest component.

Power Analytics products meet the standards established by the International Standards Organization (ISO), the American National Standards Institute (ANSI), the Institute of Electrical and Electronics Engineers (IEEE) the Nuclear Regulatory Commission (NRC), Department of Defense (DoD), NATO, Det Norske Veritas (DNV), and other standards bodies worldwide.



Power Analytics Highlights:

- Highly accurate, truly predictive diagnostics
- Intelligent alarm management
- Adaptive, real-time situational awareness
- Global consolidation and standardization
- "Black Box" data restoration and analysis
- Energy management
- Reliability-centered maintenance
- Asset management
- "BlackBoard" simulation environment
- Capacity and resources management